

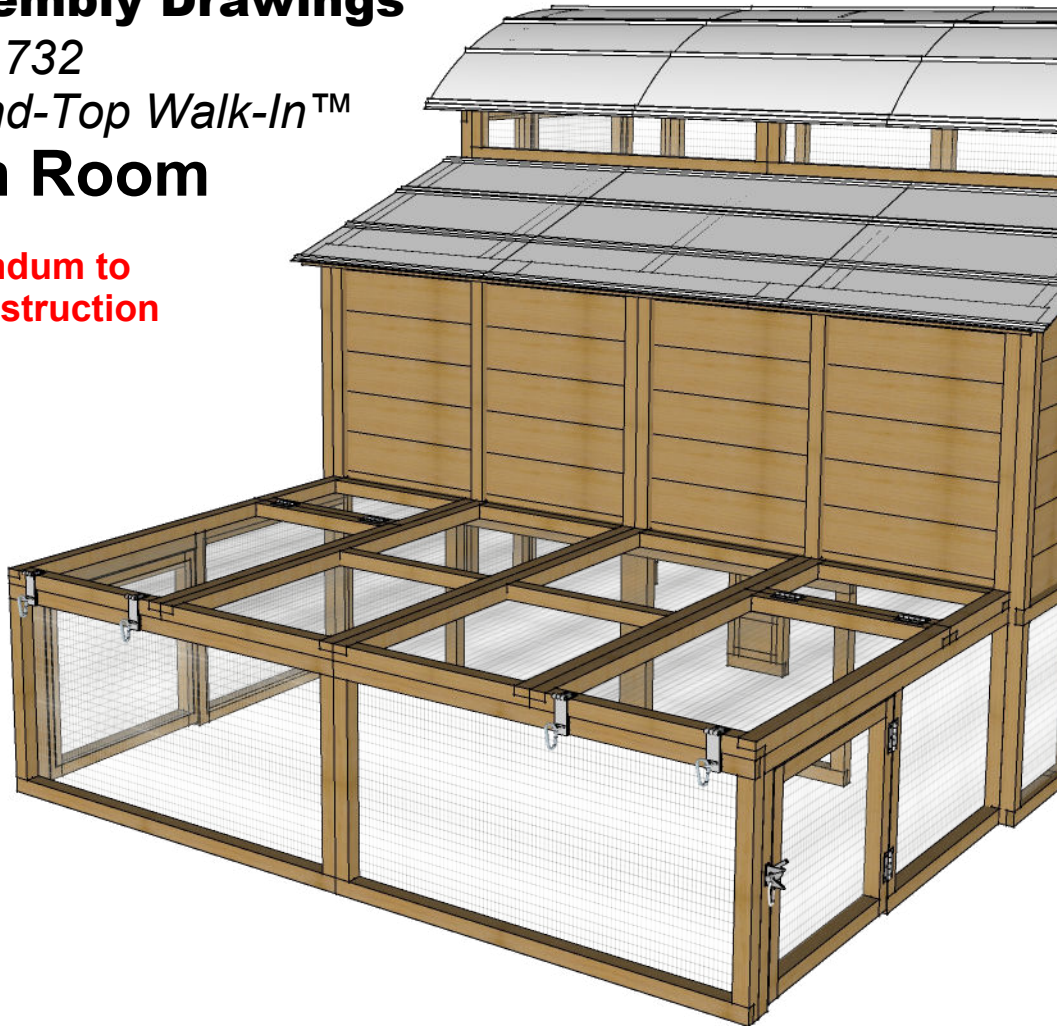


Some things you should know...

Understanding these concepts / conventions will help guide you through the instructions.

Assembly Drawings
SKU 732
Round-Top Walk-In[™]
Sun Room

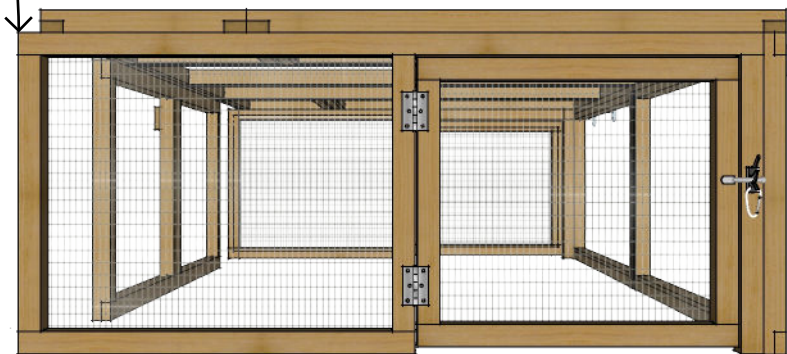
Addendum to
Full Instruction
Set



- Mating edges of parts to be flush and tight (when called for) will keep measurements in tolerance as the coop grows in size.
- You will need a drill (preferably cordless) and a tape measure will be helpful. Everything else is provided.
- Drive screws only deep enough to hold parts tight and not bury the heads too deeply as water will sit in the divots and it may cause softening of the wood and prematurely loosen screws. It will also greatly decrease your ability to easily disassemble a part if needed.
- You may end up directly driving in a screw. The brown and green screws are very aggressive and will drive with no pre-drilled hole. Keep screw entry points in the meat of the wood and not too close to edges. Screws in knots or close to edges should be pre-drilled.
- Rough Cedar may have knots, cracks or frays that are normal. We cull and cut around most imperfections we deem structurally problematic during fabrication. If you get a piece that you feel is not beautiful, please let us know so we can address your concern.
- We hand fabricated your coop with human carpenters. We work really hard to not make mistakes. In the rare occasion that we either misfabricated a part, a part was damaged in shipping, or we forgot to package a needed part, contact us and we will ship out a replacement part for you at no cost.
- We recommend dirt floors in the runs of coops. A trimmed rubber mat or turf mat can be placed in the bottom of egg boxes, or you may wish to put pine shavings them. They are left wired so they can be cleaned in the event of a broken egg.

Front (these orientation references coincide with the Walk-In Main Coop)

● Attaches to Coop

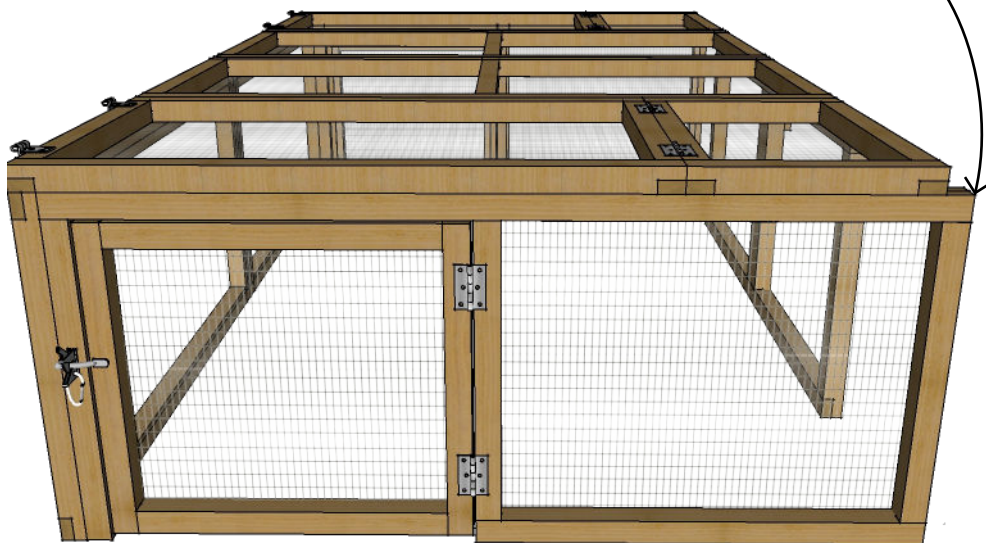


Left



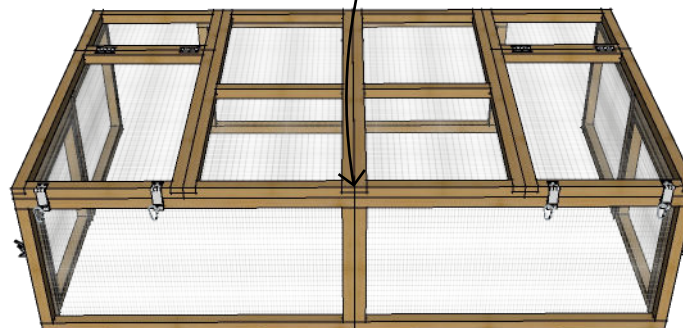
Back

● Attaches to Coop



Top

Right



MADE IN  **roost&root**
Find your inner farmer.™

Assembly Instructions
SKU 732 Walk-In Sun Room
V2 Fall 2022

Copyright © Roost & Root all rights reserved.

Orientation



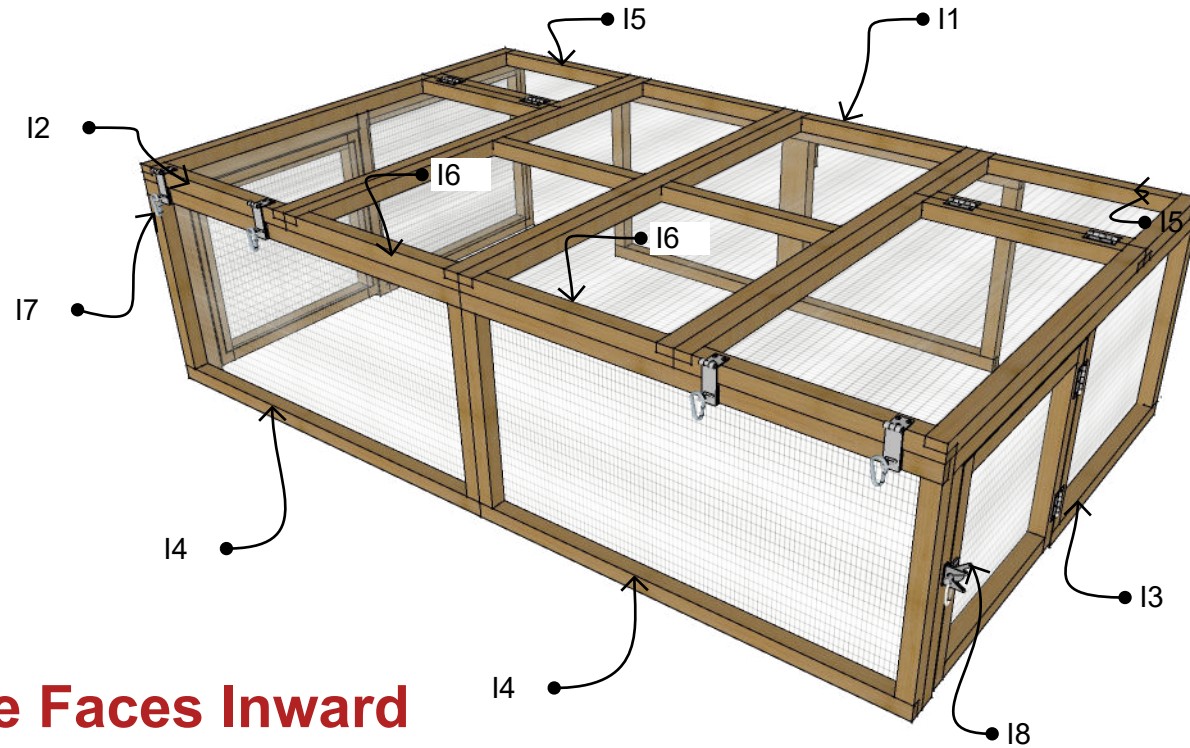
Written Parts List

I. Run Panels

- I1 Support Panel
- I2 Front Panel
- I3 Back Panel
- I4 Right Panel (Qty 2)

Note: I4 & G9 Panels are the same and if you already own a coop and did not buy the Sunroom at the same time you bought your coop you will remove your G9 panels and use them as I4's as indicated in these instructions. It may take several years for all the wood to patina to the same gray...but it will.

- I5 Top Door Panels (Qty 2)
- I6 Top Mid Panels (Qty 2)
- I7 Hasp & Clip (Qty 4)
- I8 Door Latch & Clip (Qty 2)



Wire Side Faces Inward



More about your Roost & Root product!

Care:

You can seal your coop if you wish. You should use a low VOC water based product. You can have color added to these products too...like painting, but its a wood stain that lets the wood breathe. We recommend color sealing rather than painting. You paid a premium price for your coop in part to pay for the cedar. It will last outdoors in its natural state for many years, better than almost any other wood. Sealing can keep the wood from going grey. That's the main benefit. Clean wood with mild detergent and water or with a commercially available coop cleaner as needed. Glues used in all joints are completely waterproof and all metal parts are galvanized or have exterior rated coatings.

Placement:

Easy access to water/feed and clear access to doors is needed. Sunlight is not all bad, and the Galvalume roof does a good job at not transferring heat and provides shade. Sunlight does a good job at disinfecting the ground under the coop. Fifty percent (50%) or more of direct sun is preferred. Good air movement around your coop is more important than anything else. The back side should be faced North if at all possible. Remember... High ground is dry ground. **For coop doors to open easily over time, the coop must be level.**

Digging Predators:

The welded wire and cedar frames are stronger than almost any predator less than a bear :) so diggers are the prime nuisance. By far dogs are the most common digger. Other "wild" animals, while more rare, certainly can dig too. If you're worried about diggers, stack heavy block shaped rocks around perimeter of coop to make getting under more difficult. Better yet, bury them around the perimeter just below grade. You can also attach a strip of wire that extends out from the bottom rails, and bury below the surface of the soil. We recommend dirt in bottom of coops that has good drainage. Pine shavings, straw or shredded junk mail can be used in laying areas... but is not recommended in the main run areas.

More About Cedar:

Your coop is built from rough cut Appearance Grade North American Western Red Cedar. Our 2x2's are actually custom milled by Weyerhaeuser. Wood deemed defective is culled during milling, cutting and in fabrication... about 5%-10%. Knots, blemishes, fraying, coloring variations, minor surface cracking, slight warping and periodic worm marks are normal parts of rough cedar. We try to make it to where a reversible part always has a "pretty side" and take care to make the "pretty side" show on all parts. If you're unhappy with a piece of wood we fabricated into your coop, send us a picture. We want you to love every piece of your new coop.

MADE IN 
roost&root
Find your inner farmer.™

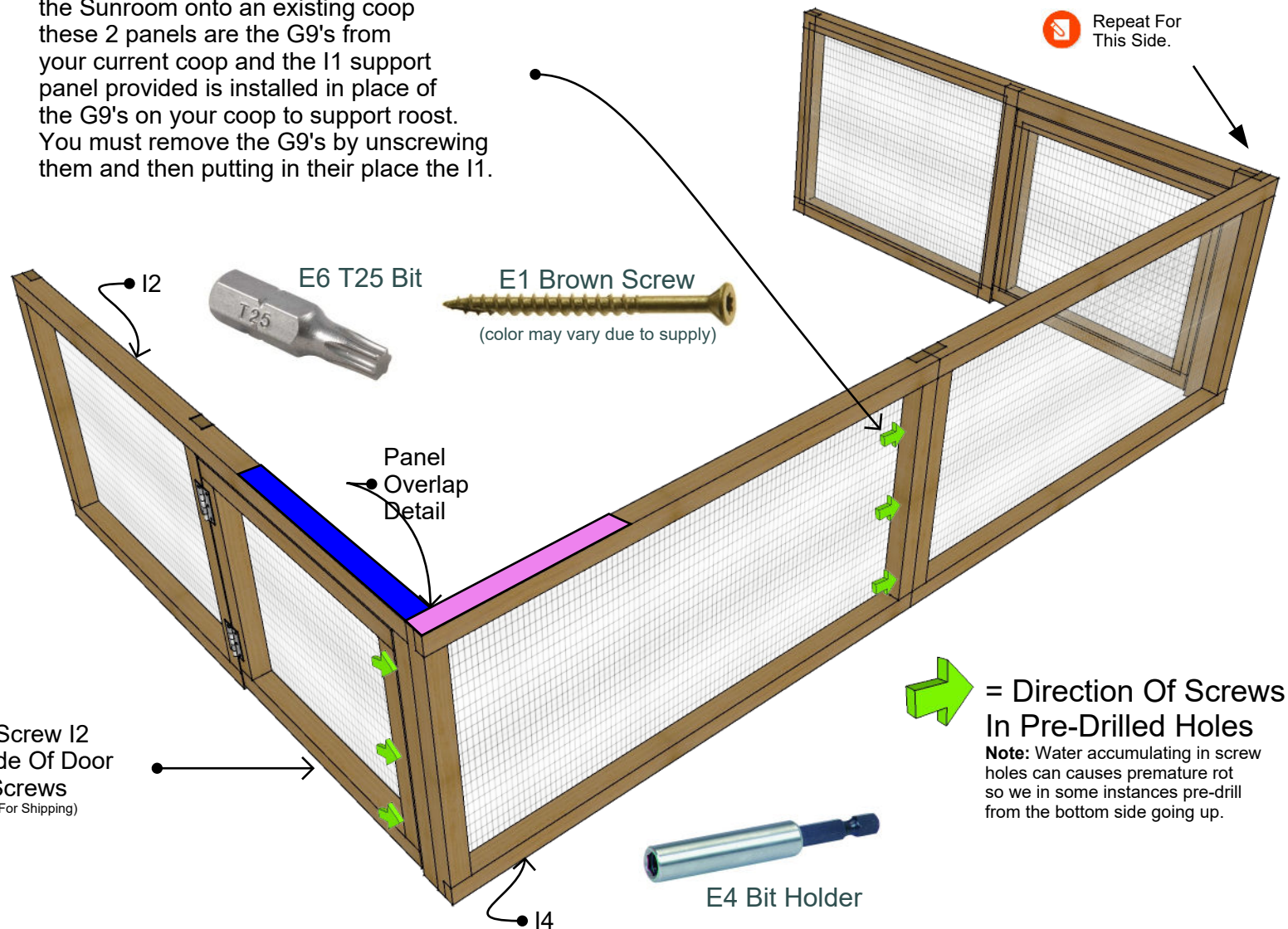
Assembly Instructions
SKU 732 Walk-In Sun Room
V2 Fall 2022

Copyright © Roost & Root all rights reserved.

Parts List

Fig 1

Please Note: If you are retrofitting the Sunroom onto an existing coop these 2 panels are the G9's from your current coop and the I1 support panel provided is installed in place of the G9's on your coop to support roost. You must remove the G9's by unscrewing them and then putting in their place the I1.



:-) Here we go !

1.1 Build Sides - Fig 1 Using **E6 T25 Bit** in **E4 Bit Holder** in your drill, drive **E1 Brown Screws** into pre-drilled holes as indicated by Green Arrows attaching **I2 Panels** (both sides) to **I4 Panels** (G9 Panels if from your existing coop) making sure all edges are flush.

Note: Only drive screws deep enough to hold and try not to bury heads too deeply into the wood.

MADE IN **roost&root**
Find your inner farmer.™

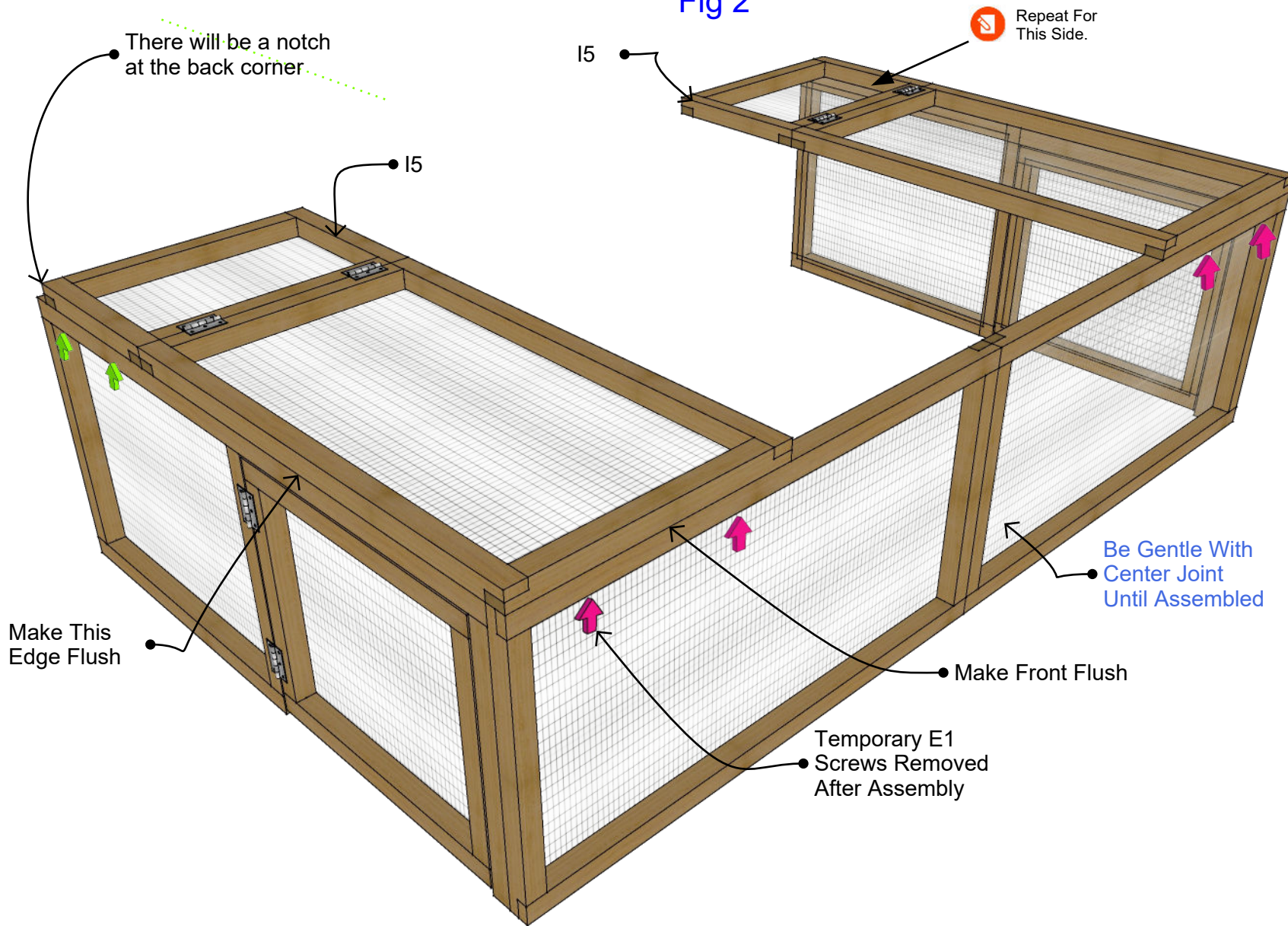
Assembly Instructions
SKU 732 Walk-In Sun Room
V2 Fall 2022

Copyright © Roost & Root all rights reserved.

Sides Walls of
Sunroom

Step 1

Fig 2



Time to top it off...

2.1 Attach Outer Tops- Fig 2 Using **E1 Brown Screws** attach the 2 **15 Outer Tops** as illustrated permanently installing screws in the positions indicated by the green arrows and temporarily affixing the front edge of the panel where indicated by the two purple arrows. Repeat for other side.

Align edges where they are flush so that the corner is square...

MADE IN  **roost&root**
Find your inner farmer.™

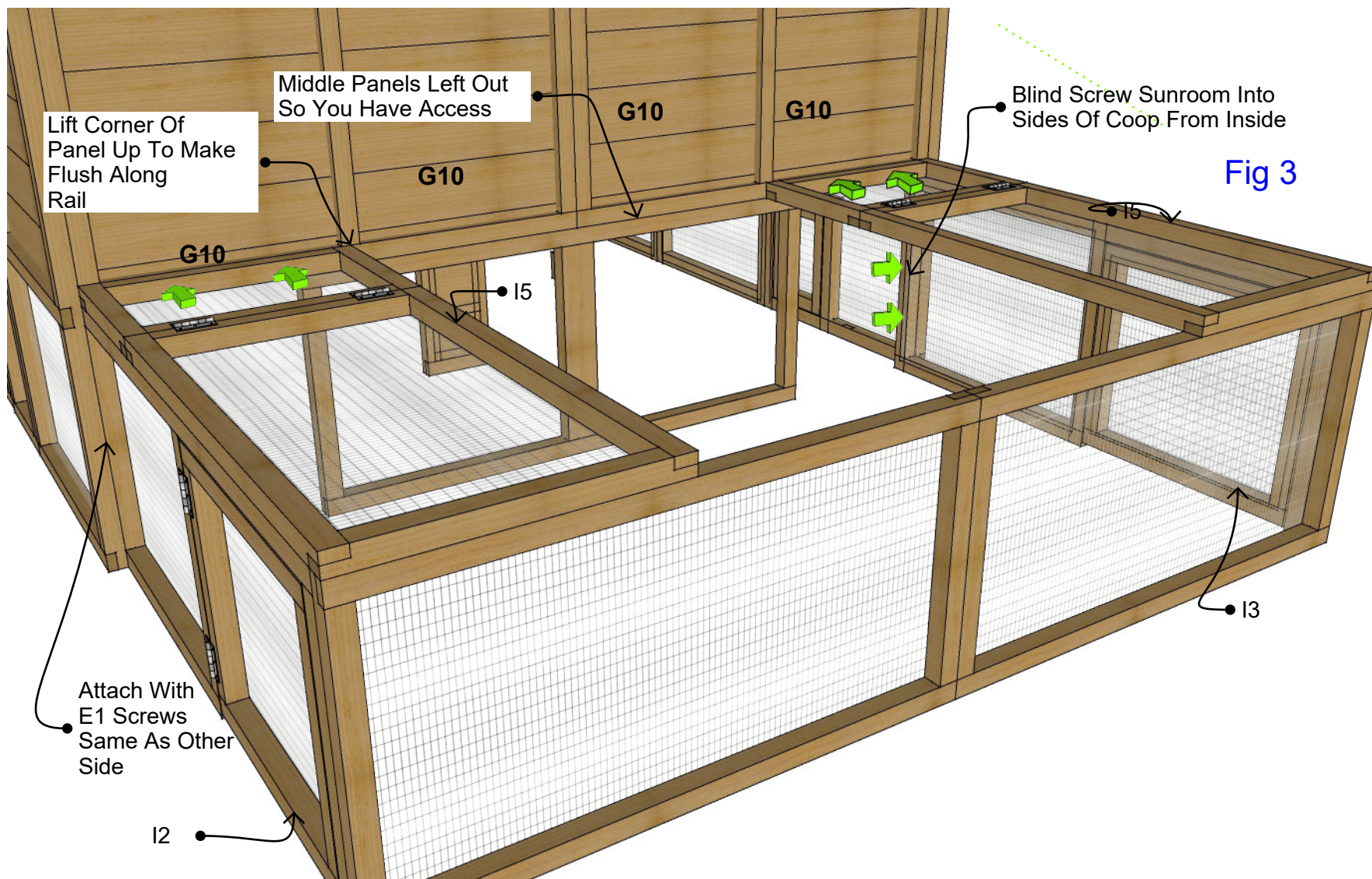
Assembly Instructions
SKU 732 Walk-In Sun Room
V2 Fall 2022

Copyright © Roost & Root all rights reserved.

Top

Step 2

Carefully Move Into Position With 2 People



Lets hook it up...

3.1 Attach Sunroom- Fig 3 With 2 people, carefully position sunroom assembly onto roost side of coop using **E1 Brown Screws** into pre-drilled holes as indicated by Green Arrows attaching the **I2 & I3 Panels** from the inside of the coop (if you cant bend down from the outside is fine too) and affixing the **I5 Panels** to the bottom sides of the **G10** panels making sure all edges are flush. Repeat for both sides.

Note: Only drive screws deep enough to hold and try not to bury heads too deeply into the wood.

MADE IN  **roost&root**
Find your inner farmer.™

Assembly Instructions
SKU 732 Walk-In Sun Room
V2 Fall 2022

Copyright © Roost & Root all rights reserved.

Attach To Coop

Step 3

If needed, gain access to these screws by flipping up top doors and standing inside run.

Images Are Illustrative. Your Latch Hardware May Look Slightly Different.

E8 Screw



E7 Bit



Bagged Gate Latch Screws



MADE IN USA
roost&root
Find your inner farmer.™

Assembly Instructions
SKU 732 Walk-In Sun Room
V2 Fall 2022

Copyright © Roost & Root all rights reserved.

Final Assembly

Step 4

Fig 4.1

Remove Temporary Screws Both Sides To Open Access Door

I6 Mid Top Panels

Da dahhhh !

Fig 4.2

4.1 Install Middle Tops - Fig 4.1 Using E1 Brown Screws attach 2 I6 Middle Top Panels as indicated by Green Arrows.

4.2 Door Hasps - Fig 4.2 Using E8 8 Screws attach the 4 Hasps as illustrated in Fig 4.2 in positions as indicated in Fig 4.1.

4.3 Gate Latches - Fig 4.3 Using bagged gate latch screws, attach the 2 latches as illustrated in Fig 4.3 onto the to side access doors in positions as indicated in Fig 4.1.

Keep Safety Clips in place at all times to keep latches securely fastened.

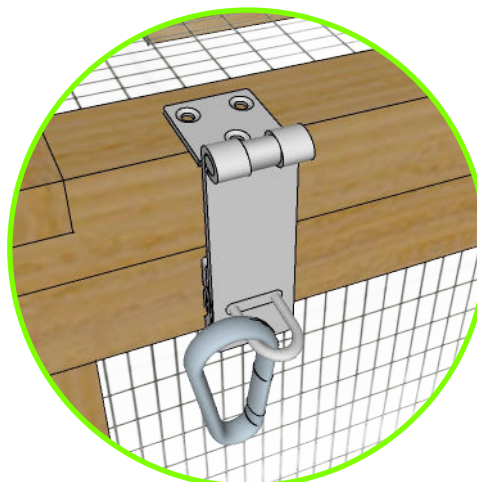


Fig 4.3

